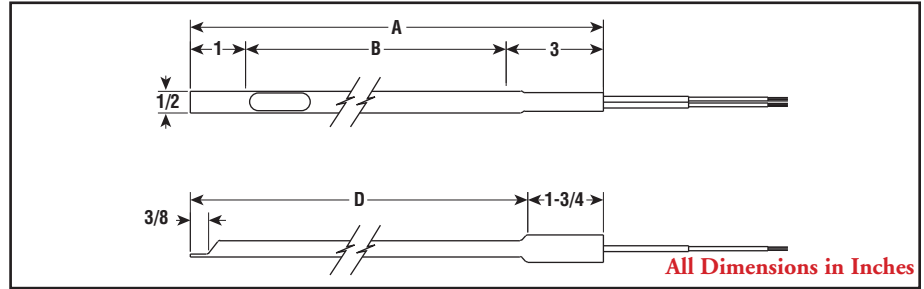


NSA & SSNHM

1/2" Wide (NSA)
1-1/8" Wide (SSNHM)



Dimensions (type NSA)



Type NSA

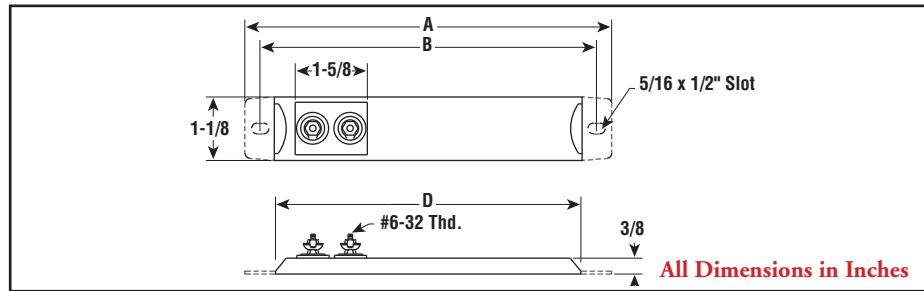
- 7-1/16 - 16-1/4" Lengths
- 125 - 400 Watts
- 120 and 240 Volt
- One-Piece INCOLOY® Sheath
- 7 - 32 W/in²
- 1500°F Max. Sheath Temp.

Type SSNHM

- 8-1/8 - 27-5/8" Lengths (with Optional Mounting Tabs)
- 200 - 800 Watts
- 120 and 240 Volt
- One-Piece Monel Sheath
- 900°F Max. Sheath Temp.
- 13 - 19 W/in²



Dimensions (type SSNHM)



Applications

Strip heaters are used for heat transfer by conduction or convection to heat liquids, air, gases and surfaces.

One-piece strip heaters are supplied without mounting tabs as standard.