

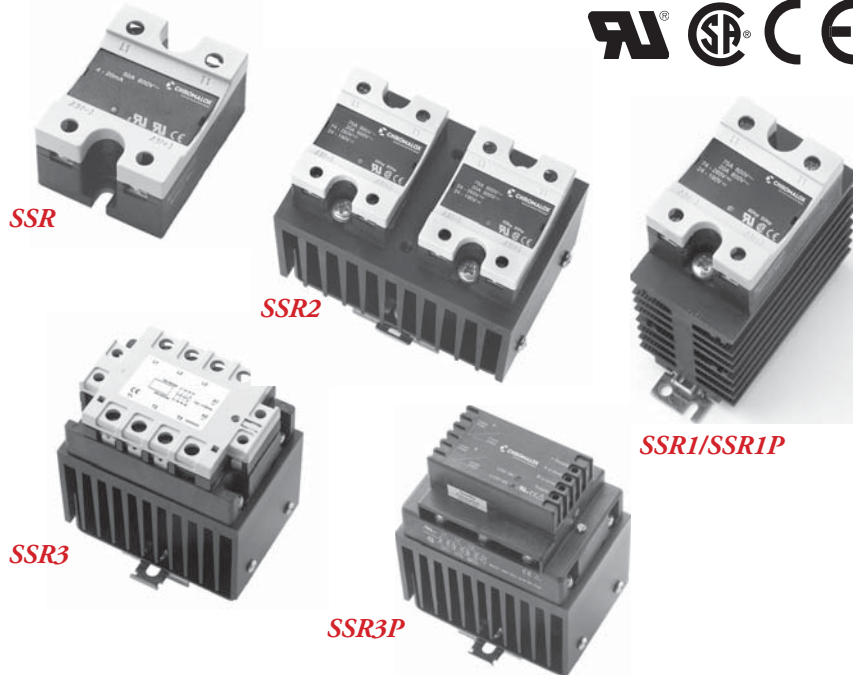
Controls

SSR Series

Power Controllers SSR, SSR1, SSR1P, SSR2, SSR3 & SSR3P



- Conservative Thermal Design
- 15 - 75 Amp Ratings
- 42-600 Vac Operational Voltage
- Single and Three Phase Offering
- Zero Cross and Phase Angle Fired
- Control Inputs:
4.5-32 Vdc
24-265 Vac/24-190 Vdc
4-20/0-20 mA
- Din Rail Mount on SSR1, SSR1P, SSR2, SSR3 and SSR3P
- UL Recognized and CSA Approved
- CE Marked
- LED Status Indicator
- IP20 Touch Protection Cover



Description

The Chromalox SSR family line of solid state relays are an ideal low cost power control solution for furnace/oven, heat treating, plastics, food, semiconductor, lighting, and drying applications just to name a few.

The SSR line of power controllers are a complete package. They feature a rugged design, touch safe exterior, back-to-back SCR design, ambient ratings of 40°C, and are DIN rail mount.

The benefits from the Chromalox SSR line are quick and low cost installation, reduced panel space, increased heater life due to fast cycling, and easy replacements for mechanical contactors.

When using any of the SSR's to switch greater than 65 amps, 4 awg wire is required. Lug PN0013-40282 (PCN 389984) can accept a 4 awg wire and can be ordered.

SSR Series

These units are rated for 25, 50 and 75 amps with operational voltages up to 600 Vac. The series is zero-fired single phase control with 4.5 - 32 Vdc and 24 - 265 Vac / 24 - 190 Vdc control signals.

SSR1, SSR2 and SSR3 Series

These units are rated for 10, 15, 25, 35, 40, 50, 70 and 75 amps with operational voltages up to 600 Vac.

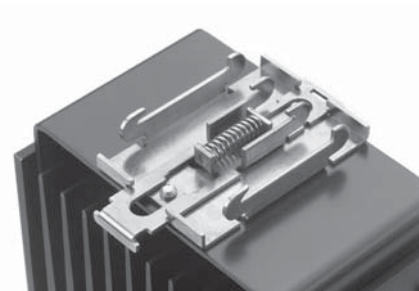
The series is zero-fired single phase, three-phase two leg and three-phase three leg control. The control signal can be 4.5 - 32 Vdc, or 24 - 265 Vac / 24 - 190 Vdc.

SSR1P and SSR3P Series

These units are rated for 15, 25, 35, 40, 50 and 70 amps with operational voltages up to 600Vac. The series is phase-angle fired single-phase and three-phase three leg design. The control signal can be 4 - 20 mA or 0 - 20 mA.

Applications:

- Mercury Relay Replacement
- Electric Ovens
- Plastics Machinery
- Packaging Equipment
- Food and Beverage Processing Equipment
- Platen Heater
- Extruders
- Resistance Heating
- Contactor Replacement



DIN Rail Mount

SCR COMPONENTS

Controls

SSR Series

Power Controllers
 SSR, SSR1, SSR1P,
 SSR2, SSR3 & SSR3P
(cont'd.)

Heat Sink Mounting Dimensions

Heat Sink w/o Fan	Amps									
Compatible solid state relay	15	25	30	35	40	45	50	65	70	75
SSR1/SSR1P	-	Fig. B	-	Fig. A	-	-	Fig. A	-	Fig. C	Fig. C
SSR2	-	Fig. C	-	-	-	-	-	-	-	-
SSR3	Fig. C	Fig. C	Fig. C	-	-	-	-	-	-	-
SSR3P	Fig. C	-	-	-	-	-	-	-	-	-

Heat Sink w/Fan	Amps									
Compatible solid state relay	15	25	30	35	40	45	50	65	70	75
SSR1/SSR1P	-	-	-	-	-	-	-	-	-	-
SSR2	-	-	-	-	-	-	Fig. D	-	-	Fig. D
SSR3	-	-	-	-	-	Fig. E	-	Fig. E	-	-
SSR3P	-	Fig. E	-	-	Fig. E	-	-	-	-	-

	Dimensions		
	H/in. (mm)	W/in. (mm)	D/in. (mm)
Fig. A	4.05 (103)	3.54 (90)	4.29 (109)
Fig. B	4.05 (103)	1.77 (45)	4.29 (109)
Fig. C	3.22 (82)	4.64 (118)	4.80 (122)
Fig. D	5.70 (145)	4.80 (122)	4.92 (125)
Fig. E	5.70 (145)	4.80 (122)	4.92 (125)
Fig. F	2.25 (57)	1.75 (44)	1.125 (28)

