

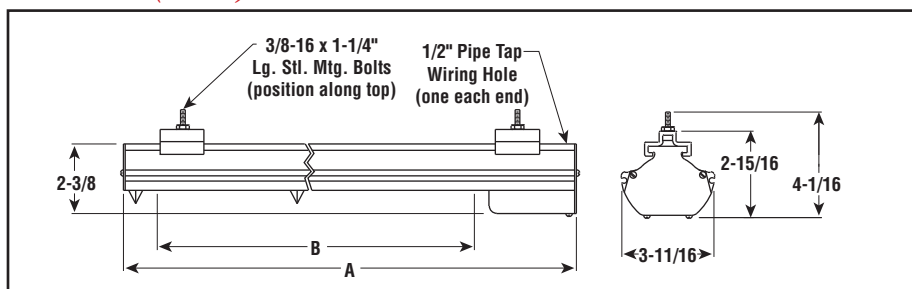
# S-RAD

## Single Element Radiant Heater



- 2.1 kW/Ft<sup>2</sup>
- 0.95 - 4.4 kW
- 120, 208, 240 and 275 Volt
- 3/8" Dia. INCOLOY® Sheath Elements (type SRTU)
- 1500°F Max. Sheath Temp.
- Single End Termination

### Dimensions (Inches)



### Applications

- Resin Curing
- Thermoforming
- Equipment Packaging
- Mirror Manufacturing
- Rubber Curing

### Features

#### Complete, Ready-to-Connect Assembly

available in various lengths to accommodate work of varying dimensions.

**Movable Mounting Clamps and Bolts** are supplied to accommodate many mounting configurations such as banks, tunnels and oven sections.

**Process Temperature Control** — Radiant heater output may be controlled with Chromalox SCR Power Controllers, Percentage Timing Input Controls and Non-Contact Temperature Sensors. See the Controls section of this catalog.

**Additional Sizes and Ratings** — Contact your Local Chromalox Sales office for price and availability.

### Construction

**Enclosed Chromalox Alloy-Sheath Tubular Heating Element** is completely isolated and supported on secondary insulation for improved electrical safety. Designed for long life, the element is more resistant to hard blows than quartz lamp or tube and open coil types.

**Rigid Extruded Aluminum Housing** protects heating element from harsh industrial environments.

**Highly Polished Aluminum Reflectors** give good reflectivity and heat transfer, and are easily cleaned to maintain energy efficiency.

### Accessories

**Protective Grille** — Optional snap-in sections help protect personnel and work from contact with hot elements.

**Companion Reflector** — Optional radiant companion reflectors improve oven efficiency. See Radiant Accessories in this section.

**Note:** Model S-RAD heaters are not listed for use in fixed electric space heated applications under NEC 424. If they are to be used in such applications, installation must be approved by local code enforcement authorities.

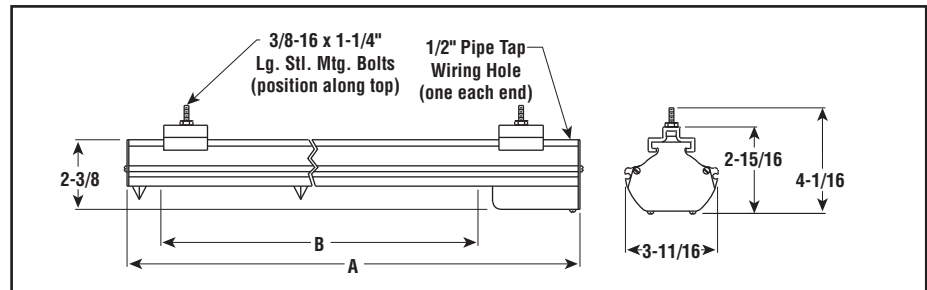
METAL SHEATH  
RADIANT

# S-RAD

## Single Element Radiant Heater (cont'd.)



### Dimensions (Inches)



### Specifications and Ordering Information

kW	Volts	Length (In.)		Model	Stock	PCN	Optional Grille <sup>1</sup>	Replacement Elements	Wt. (Lbs.)
		Overall A	Heated B						
0.95	120	24-3/8	16-1/2	S-RAD-2	NS	115334	(1) GR-2	SRTU-209	5
0.95	208	24-3/8	16-1/2	S-RAD-2V	NS	115342	(1) GR-2	SRTU-209V	5
0.95	240	24-3/8	16-1/2	S-RAD-2	NS	115350	(1) GR-2	SRTU-209	5
0.95	275	24-3/8	16-1/2	S-RAD-2V	NS	115369	(1) GR-2	SRTU-209V	5
1.3	120	30-5/8	22-3/4	S-RAD-3	NS	115377	(1) GR-3	SRTU-313	6
1.3	208	30-5/8	22-3/4	S-RAD-3V	NS	115385	(1) GR-3	SRTU-313V	6
1.3	240	30-5/8	22-3/4	S-RAD-3	NS	115393	(1) GR-3	SRTU-313	6
1.3	275	30-5/8	22-3/4	S-RAD-3V	NS	115406	(1) GR-3	SRTU-313V	6
2.2	208	46-5/8	38-5/8	S-RAD-4V	NS	115414	(1) GR-4	SRTU-422V	9
2.2	240	46-5/8	38-5/8	S-RAD-4	NS	115422	(1) GR-4	SRTU-422	9
2.2	275	46-5/8	38-5/8	S-RAD-4V	NS	115430	(1) GR-4	SRTU-422V	9
3	208	61-3/8	53-1/4	S-RAD-5V	NS	115457	(1) GR-5	SRTU-530V	11
3	240	61-3/8	53-1/4	S-RAD-5	NS	115465	(1) GR-5	SRTU-530	11
3	275	61-3/8	53-1/4	S-RAD-5V	NS	115473	(1) GR-5	SRTU-530V	11
3.75	208	73-3/4	65-1/2	S-RAD-6V	NS	115490	(1) GR-2, (1) GR-5	SRTU-638V	13
3.75	240	73-3/4	65-1/2	S-RAD-6	NS	115502	(1) GR-2, (1) GR-5	SRTU-638	13
3.75	275	73-3/4	65-1/2	S-RAD-6V	NS	115510	(1) GR-2, (1) GR-5	SRTU-638V	13
4.4	208	85-3/4	77-1/2	S-RAD-7V	NS	115537	(1) GR-2, (1) GR-6	SRTU-744V	15
4.4	240	85-3/4	77-1/2	S-RAD-7	NS	115545	(1) GR-2, (1) GR-6	SRTU-744	15
4.4	275	85-3/4	77-1/2	S-RAD-7V	NS	115553	(1) GR-2, (1) GR-6	SRTU-744V	15

**Stock Status:** S = stock NS = non-stock

**To Order**—Specify model, PCN, kW, volts, quantity, optional grille and replacement elements (if needed).

**Notes —**

1. See Accessories in this section for ordering information.

2. 480V ratings are available on some models. Contact your Local Chromalox Sales office for price and availability.